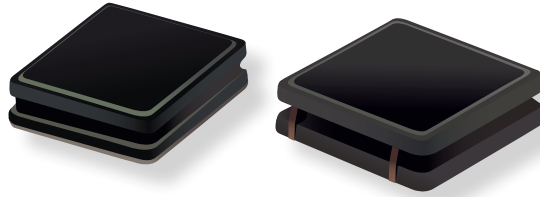


## New Product Release

INDUCTIVE COMPONENTS



### Bourns Releases Automotive Grade Semi-Shielded Power Inductor Series

*Model SRN2508A and SRN3010TA*

Riverside, California - October 18, 2017 - Bourns Inductive Components Product Line is introducing the Model [SRN2508A](#) and [SRN3010TA](#) Semi-Shielded Power Inductor Series that are compact and offer a low profile of 1 mm maximum height. These inductors provide effective magnetic shielding with lower radiation compared to non-shielded inductors, and reduced cost in comparably-sized conventional ferrite shield inductors.

Both series are [AEC-Q200 qualified](#) with an operating temperature up to +125 °C. Typical automotive application areas for these inductors are driver assistant devices, infotainment systems and lighting. Other suitable non-automotive applications include wearable devices, HDDs, SSDs, smartphones and LCD displays.

Model	Component Size	Inductance Range	Heating Current Range	Saturation Current Range
SRN2508A	2.5 x 2 x 0.8 mm	0.47 - 10 µH	0.45 - 1.45 A	0.55 - 2.5 A
SRN3010TA	3 x 3 x 1 mm	1 - 22 µH	0.6 - 2.1 A	0.43 - 1.8 A

Please visit the Bourns website at [www.bourns.com](http://www.bourns.com) for additional product details. Should you have any questions or need additional information, please feel free to contact [Customer Service/Inside Sales](#).

#### Features

- Semi-shielded construction
- Low profile
- AEC-Q200 qualified
- RoHS compliant\* and halogen free\*\*

#### Applications

- Automotive systems: Driver assistant, infotainment, lighting
- DC/DC converters
- Power supplies
- Wearable devices
- HDD, SSDs
- Smartphones
- LCD displays

\* RoHS Directive 2002/95/EC Jan. 27, 2003 including annex and RoHS Recast 2011/65/EU June 8, 2011.

\*\*Bourns considers a product to be "halogen free" if (a) the Bromine (Br) content is 900 ppm or less; (b) the Chlorine (Cl) content is 900 ppm or less; and (c) the total Bromine (Br) and Chlorine (Cl) content is 1500 ppm or less.