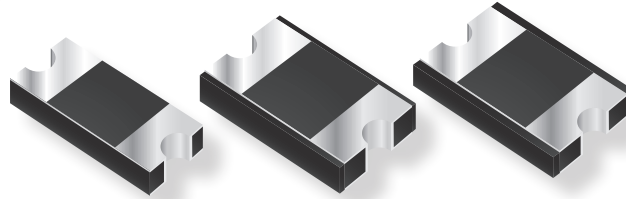


New Product Release

RECTIFIER DIODES



Bourns Adds New Rectifier Chip Diode Products

Riverside, California - January 23, 2018 - Bourns is pleased to announce the release of ten new rectifier diode series for general applications. Portable electronics, communications, computing and video equipment manufacturers are challenging the semiconductor industry to develop increasingly power efficient solutions with smaller electronics components.

The **Bourns® Model CD214A-BxR Series** are available in a compact 0.96 mm low-profile SMD package, measuring 4.5 mm x 2.2 mm x 0.96 mm and intended to be mounted directly onto an FR4 printed circuit board. The devices fit the SMA (DO-214AC) footprint.

The **Bourns® Model CD214B-BxR** and **CD214B-FSx Series** are available in a compact 1.1 mm low-profile SMD package, measuring 5.2 mm x 3.6 mm x 1.1 mm and intended to be mounted directly onto an FR4 printed circuit board. The devices fit the SMB (DO-214AA) footprint.

The **Bourns® Model CD214C-BxR**, **CD214C-FSx** and **CD214C-Sx Series** are available in a compact 1.1 mm low-profile SMD package, measuring 8.0 mm x 5.0 mm x 1.1 mm and intended to be mounted directly onto an FR4 printed circuit board. The devices fit the SMC (DO-214AB) footprint.

(See Page 2 for General Specifications)

Each of the series is RoHS compliant* and halogen free**. Product data sheets with detailed specifications and a cross reference search feature can be viewed on the Bourns website at www.bourns.com.

Features

- RoHS compliant* and halogen free**
- Low forward voltage
- High current capability
- Compact surface mount package

Applications

- Switch Mode Power Supplies (SMPS)
- High frequency rectification
- DC/DC converters
- Portable electronics

* RoHS Directive 2002/95/EC Jan. 27, 2003 including annex and RoHS Recast 2011/65/EU June 8, 2011.

** Bourns considers a product to be "halogen free" if (a) the Bromine (Br) content is 900 ppm or less; (b) the Chlorine (Cl) content is 900 ppm or less; and (c) the total Bromine (Br) and Chlorine (Cl) content is 1500 ppm or less.

Series	Description	Maximum Repetitive Peak Reverse Voltage, V_{RRM}	Maximum Average Forward Rectified Current, $I_{F(AV)}$	Instantaneous Forward Voltage, V_F
CD214A-B1xR	Schottky Barrier Rectifiers	20 ~ 100 V	1 A	0.37 ~ 0.76 V
CD214A-B2xR	Schottky Barrier Rectifiers	20 ~ 100 V	2 A	0.39 ~ 0.60 V
CD214A-B3xR	Schottky Barrier Rectifiers	20 ~ 60 V	3 A	0.39 ~ 0.58 V
CD214B-B2xR	Schottky Barrier Rectifiers	20 ~ 100 V	2 A	0.49 ~ 0.75 V
CD214B-B3xR	Schottky Barrier Rectifiers	20 ~ 100 V	3 A	0.48 ~ 0.78 V
CD214B-FS2x	Fast Response Rectifiers	200 ~ 800 V	2 A	0.94 ~ 1.65 V
CD214B-FS3x	Fast Response Rectifiers	200 ~ 800 V	3 A	0.93 ~ 1.90 V
CD214C-B3xR	Schottky Barrier Rectifiers	20 ~ 100 V	3 A	0.47 ~ 0.78 V
CD214C-FS3x	Fast Response Rectifiers	200 ~ 600 V	3 A	0.93 ~ 1.40 V
CD214C-S3x	High Voltage Rectifiers	200 ~ 1000 V	3 A	0.96 V